

FISHWAY STATUS REPORT

Date: 8/9/2014
Inspection Period: 8/03 thru 8/09/2014

All JD Fishways are inspected twice per day during fish season, March. 1 - Nov. 31
 Frequent monitoring of the PLC displays in SMF Fisheries Office as necessary.

	JOHN DAY DAM	
	JD/WC Project-Fisheries P.O. Box 823 Rufus, Oregon 97050 Phone: 541-506-7860	

John Day Dam	Inspections	Criteria	Total Number of Inspections: 14	Temperature: 70 F
	Out of Criteria	Limit		Secchi: 5.7 Ft.
NORTH FISHWAY			In regular service. Five AWS pumps available since 4/11	
Exit differential	0	≤ 0.5'		
Exit Control weirs	0	High setting	High setting is normal for JDN	
Count station differential	0	≤ 0.3'		
Weir crest depth (DS gauge)	0	1.0' ± 0.1'		
Entrance differential	0	1.0' - 2.0'	AVG 1.5	
SOUTH FISHWAY			In regular service with all three AWS turbines	
Exit differential	0	≤ 0.5'		
Exit Control weirs	0	MID setting	MID is normal for JDS	
Count station differential	0	≤ 0.3'		
Weir crest depth (US gauge)	0	1.0' ± 0.1'		
South entrance differential	0	1.0' - 2.0'	AVG 1.5	
Entrance weir SE1	0	depth (≥ 8')	AVG 8.7	
Collection channel velocity	0	1.5 - 4 fps	AVG 2.94	
Bay 1 differential	0	1.0' - 2.0'	AVG 1.8	
N. Entrance PH(Bay 19)differential	0	1.0' - 2.0'	AVG 1.6	
Entrance weir NE1	0	depth (≥ 8')	AVG 8.5	
Entrance weir NE2	0	depth (≥ 8')	AVG 8.5	
JUVENILE PASSAGE			JBS/SMF changed to bypass at switch gate due to water temp of 70 F on 7/31	
Forebay/bypass conduit differential	0	4.0' - 5.0'	AVG 4.6	
Submersible traveling screens	0	visual inspect	Next monthly underwater camera inspection scheduled for the 3 rd week of August	
Turbine trashrack drawdown	0	<1.5', wkly	Next monthly MU intake trashracks raking scheduled for the 4 th week of August	
Vert barrier screen drawdown	0	<1.5', wkly	Gateway drawdown performed twice a week or more frequently if high river debris loads	
Spill volume	0	30/40 %	Per the PNNL experimental block design, changing every two days.	
Spill pattern	0	per FPP		
Turbine Unit Priority	0	per FPP		
Turbine 1% Efficiency	0	per FPP		

SMOLT MONITORING FACILITY

Operation: SMF went into bypass at switch gate due to water temp of 70 F. PSMFC sampling twice a week until the temp drops below 69.5 F; it is 72 F as of 8/11. JD Fisheries works regular 24/7 swing shift schedule as required by FPP; it will continue this until the end of sampling season on 9/15.

Debris: Moderate to light; primarily tumbleweeds with some sticks, branches, and wooden debris.

Maintenance: None

Research:

All PNNL 2014 activities at JD completed on 7/31. Equipment dismantling and cleanup underway.

US Fish and Wildlife Service's pilot tagging of adult lamprey started at JD SMF on 7/14 and will continue as long as the fish are available. The tagged fish are transported and released at Ice Harbor for the Snake River dams passage research.

Fallbacks: AVG: 16 MAX: 16 MIN: 16 (6 hr. conditioning samples twice weekly at temps over 70 F.)

OTHER ISSUES:

JOHN DAY

BIRDS : see the Avian Numbers tab. We report all species and locations, but in reality only gulls in the tailrace BRZ are relevant at JD.

USDA boat crew completed 2014 hazing season on 7/29 for 2014. Gull predation continues light to minimal.

Operations:

JD North Fishway is in regular service and meeting the FPP criteria.

JD South Fishway in regular service and meeting the FPP criteria.

Maintenance:

Mid-season ROV grating inspections were performed by District Safety Office's crew on 8/5. JD South Collection Channel was done at 0800 to 1000 hrs.

JD North entrance through the first inclining weir was done at 1100 to 1200 hrs. All grating segments were found in place and properly attached.

JD North AWS pumps - five out of total six are available for service since 4/11. AWS pump # 4 continues in OOS status due to its lower bearing issues.

JD Engineering/contractor continue with its repairs.

Calibration: 8/8/2014 All sensors were within the criteria of 0.3'.

JD South Fishway's bay 19 tailrace sensor was determined erratic/failed on 7/22 and TR'd immediately. JD Electrical found it clogged up by debris and cleaned it up on 7/30. Awaiting for a new sensor to replace it.

Gatewell Drawdown: 8/3 and 8/7. No units measured greater than 1.3 ft of differential for this reporting week.

Condition of smolts sampled at SMF was normal for this time of year, with no signs of elevated descaling during the entire week.

Research:

JD Fisheries continues coordinating with research groups performing 2014 studies:

All Tribal collection of adult lamprey completed by 8/6 for 2014 passage season.

PSMFC/WDFW dam angling from the JD PH tailrace deck for pikeminnow underway; total YTD JD catch is 3,848 as of 8/03 which is a great result!

U of I Testing of JD North LPS (Lamprey Passage System) started in late June and continues very successful with a high diversion of adult lampreys.

PNNL Summer collection and tagging of fish at JD SMF completed by 7/13. Monitoring of marked fish with hydrophones completed on 7/31.

Dismantling of gear and removal of office trailers from forebay deck is scheduled for 8/4-8/11.

2014 Adult Salmonids counting by Normandeau Ass. continues through October 31 as required by FPP.

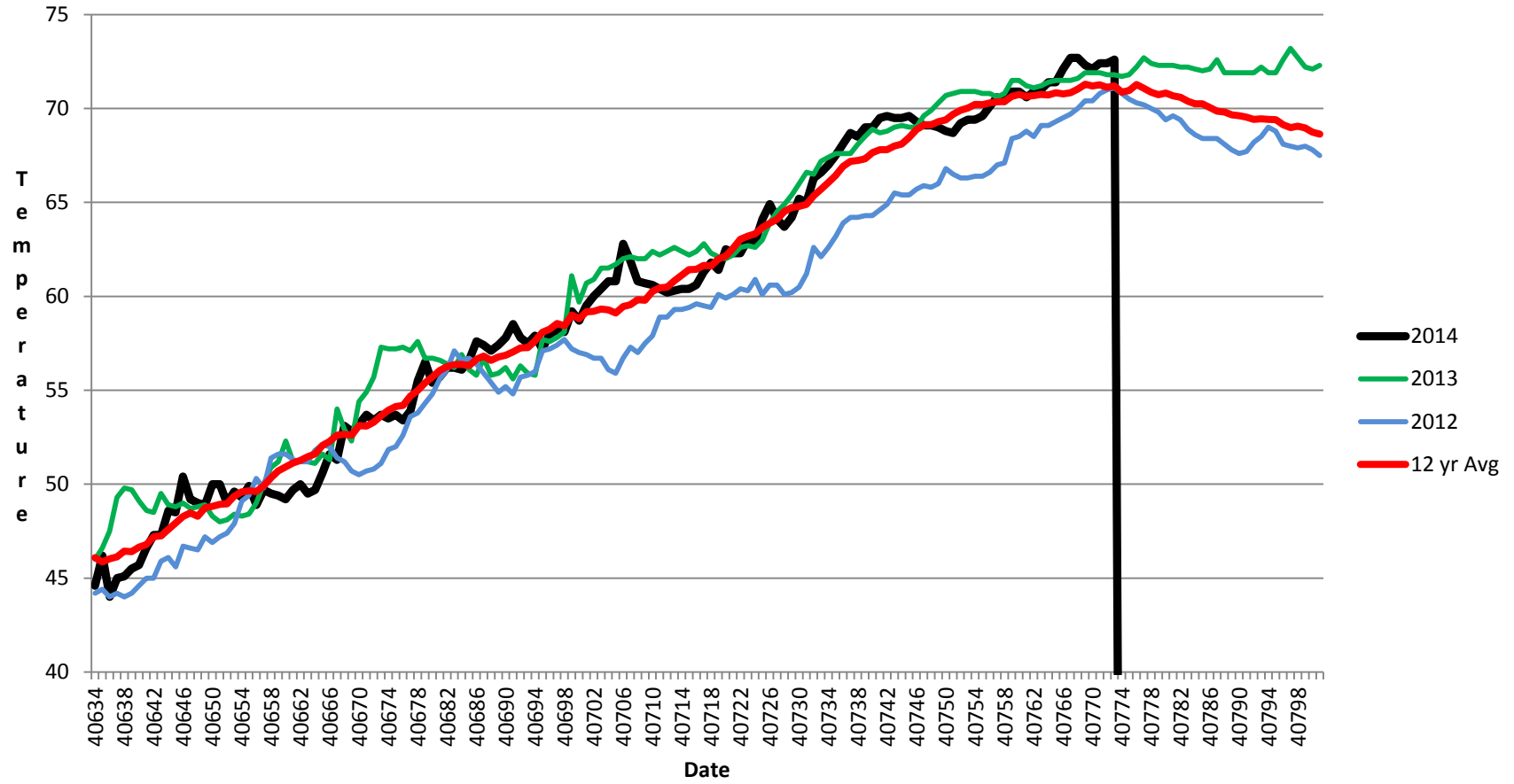
Adult Salmonids Radio telemetry evaluations are ongoing at both JD adult fishway. University of Idaho crew is in charge of detecting of all adult salmonids, which were tagged and released at Bonneville Dam.

Glen A. Smith PE

Date: ___ 12-Aug-14

OPM John Day/Willow Creek Project

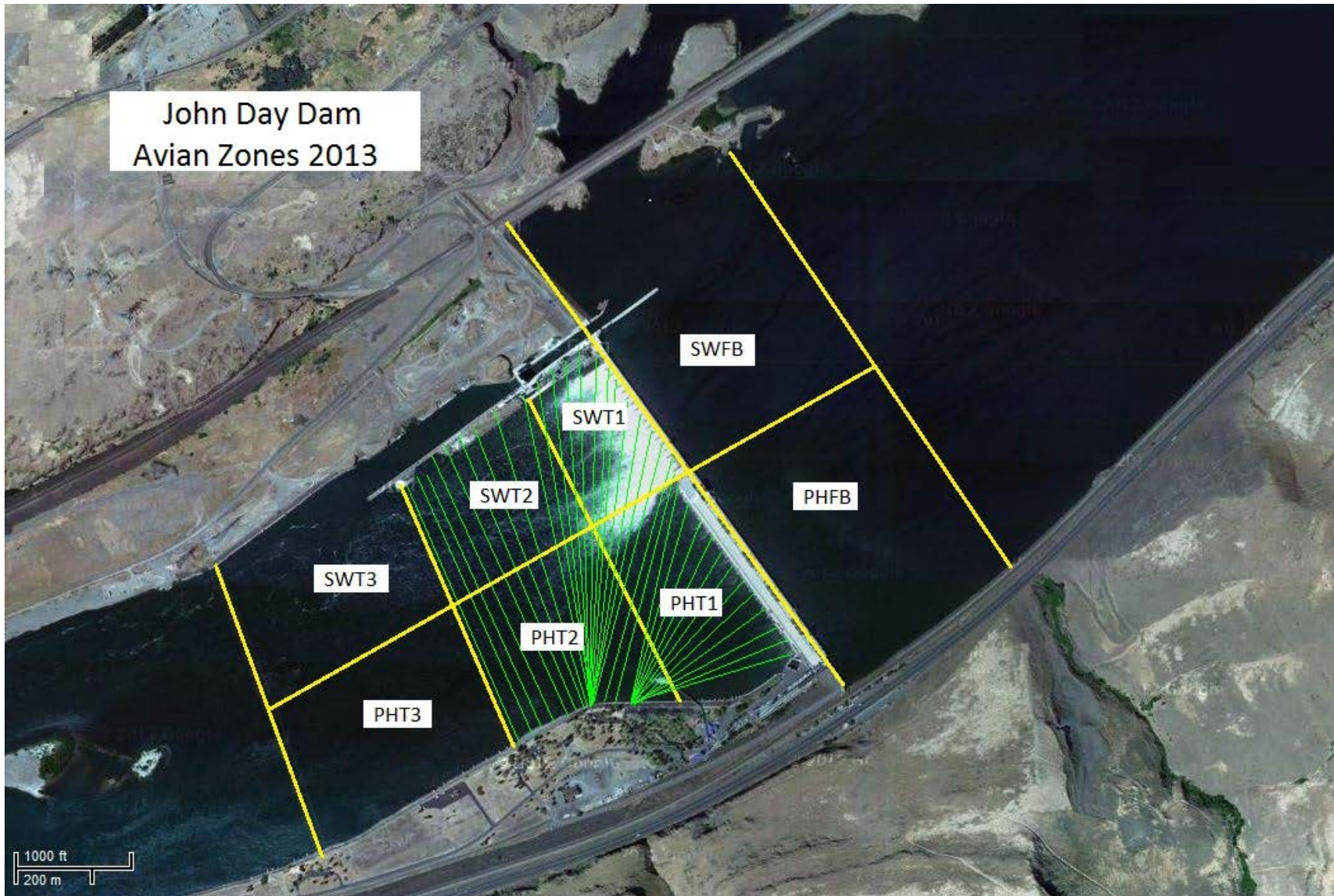
JDA SMF Water Temp



JDA COLLECTION CHANNEL VELOCITY

Date		<u>3-Aug-14</u>	
By:		<u>pkrcg</u>	
Bay(s)	Time	Sec.	Velocity (f/s)
0-2	01:15.0	75	2.40
2 - 4	0:02:19	139	2.81
4 - 6	0:03:16	196	3.16
6 - 8	0:04:18	258	2.90
8 - 10	0:05:22	322	2.81
10 - 12	0:06:34	394	2.50
12 - 14	0:07:38	458	2.81
14 - 16	0:08:41	521	2.86
16 - 18	0:09:24	564	4.19
			2.94

John Day Dam
Avian Zones 2013



John Day:

	Temp:	Secchi:	Fallbacks:	
Sun	70	6.0		
Mon	70	6.0		
Tues	70	6.0		
Wed	71	5.0		
Thur	70	5.5	16	6 hr condition sample
Fri	71	5.5		
Sat				
AVG:	70	AVG: 5.7	AVG 16	
			MAX 16	
			MIN 16	

	NE1	NE2	S.Ent	SE1	N.Ent	JBS Diff	Bay1	Bay19	
Sun	8.1	8.2	1.5	8.4	1.6	4.6	1.6	1.6	
Sun	8.3	8.3	1.4	8.9	1.5	4.6	1.6	1.7	
Mon	8.5	8.5	1.5	8.3	1.5	4.5	1.7	1.5	
Mon	8.1	8.1	1.4	8.4	1.5		1.7	1.4	
Tues				8.1	1.4	4.6			ROV
Tues	9.0	9.0	1.3	9.5	1.6	4.7	1.4	1.3	
Wed	8.9	8.9	1.4	8.6	1.4	4.6	1.8	1.6	
Wed	8.6	8.6	1.9	8.5	1.6	4.5	1.9	2.0	
Thur	8.5	8.5	1.6	8.5	1.4	4.5	1.9	1.8	
Thur	9.3	9.3	1.7	8.5	1.4	4.5	2.0	1.8	
Fri	8.0	8.0	1.4	8.9	1.4	4.6	1.7	1.4	
Fri	8.5	8.5	1.5	10.2	1.4	4.5	1.8	1.5	
Sat	8.2	8.2	1.7	9.1	1.4	4.5	2.0	1.6	
Sat	8.2	8.2	1.8	8.5	1.5	4.6	2.0	1.3	
AVG:	8.5	8.5	1.5	8.7	1.5	4.6	1.8	1.6	